

COLIC CHOKER

WEIGHT LOSS FEED WASTAGE

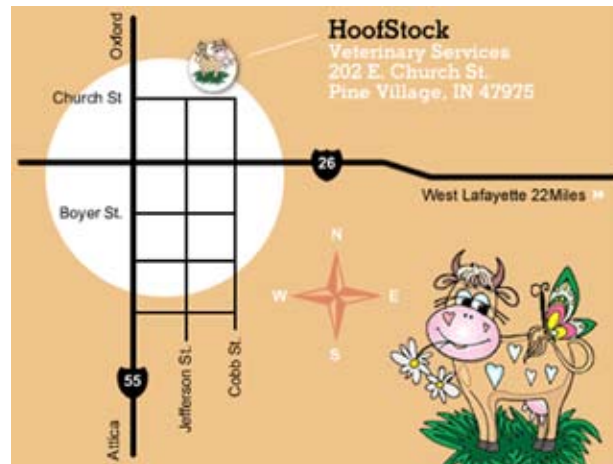
ALL CAUSED BY DENTAL PROBLEMS



HoofStock
Veterinary Service
Patient Health is Our
Primary Concern

Dr Cathy Alinovi
www.hoofstockvet.com

765-714-5973
Pine Village, Indiana



Warren Spry

Equine Dentist
and
Dental Instructor

Prichard, West Virginia

Veterinary Reference Guide

Equine Dental Diagnosis and Treatment

HoofStock
Veterinary Service

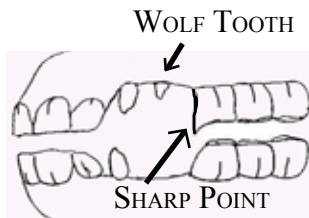
Dr Cathy Alinovi
www.hoofstockvet.com

in partnership with

Warren Spry

Equine Dentist

Horses need regular dental care to maintain proper chewing and comfort in their mouth. Their upper jaw is larger than the lower, which makes the teeth wear on a slant. They also need different types of dental maintenance throughout their lives.



FOALS AND YEARLINGS

Cap Removal

As the permanent teeth erupt, the deciduous teeth may not shed properly. Caps, which are baby teeth that have not shed, must be removed to prevent future problems.

Sharp Points

Because the milk teeth are soft, they can develop sharp points quickly. Regular floating and check ups keep young horses comfortable so that training is pain-free.

Malocclusions

Identifying abnormalities early will prevent problems. Parrot mouth and monkey mouth can sometimes be improved with early intervention. Abnormal incisor wear can also be corrected with early detection.

Wolf Teeth

The picture above shows the wolf tooth's location in the mouth. Wolf teeth can cause head shyness and tossing when ridden. They are typically removed at a year of age.



PERFORMANCE HORSES

Bit Seat

The first premolars sit directly behind the interdental space (where the bit sits). Filing these teeth into a smooth ramp creates a bit seat. This prevents the horse from grasping the bit in his teeth.

Sharp Points

The chewing pattern of a horse creates sharp points on the inside of the lower molars, and outside of the upper molars. These points must be filed to prevent painful sores from developing.

Speculums allow for a complete oral examination, and problems like missing teeth (as shown below) can only be identified this way.

The tooth to the right is an extracted rear molar that lacked an opposing surface. It eventually grew into the upper jaw.

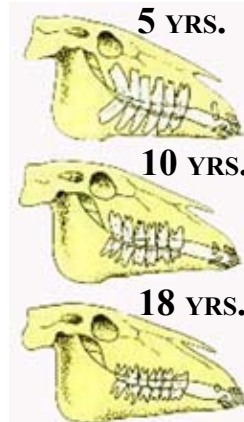


Malocclusions

Abnormalities can develop from many things. Cribbing and wood chewing can cause incisor problems. These are corrected by special procedures that wear down the incisors so the molars can meet properly.

Nutrition

Nutritional needs increase with performance and activity level. As we ask more of our horses, we must make sure their teeth are in good shape. Proper chewing allows for better absorption of nutrients.



Teeth grow throughout a horse's life. As the horse ages, the tooth root shortens and becomes weaker. While power floating is appropriate for healthy middle aged horses, greater care must be taken with a geriatric horse. Loose and missing teeth can create many problems. Routine check ups can identify most dental problems in an older horse.



OLDER HORSES

Weight Loss

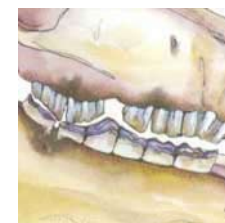
Missing teeth can create a stepped mouth. Without an opposing wear surface, a molar becomes too long and prevents proper grinding. Impactions of a tooth or socket can cause pain and infection leading to weight loss.

A wave mouth prevents a horse from grinding and chewing food.

Proper dental care allows horses to utilize feed efficiently. Older, hard keepers must be checked routinely to prevent problems that cause weight loss.



WAVE MOUTH



STEPPED MOUTH