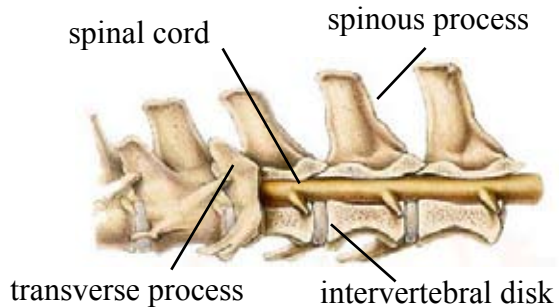


VETERINARY SPINAL MANIPULATION THERAPY

VSMT is an integrated procedure that can be used in veterinary medicine for the diagnosis, treatment, and potential prevention of select musculoskeletal disorders.

HEALTHY SPINAL COLUMN



A joint in healthy alignment results in normal blood flow and nerve transmission.

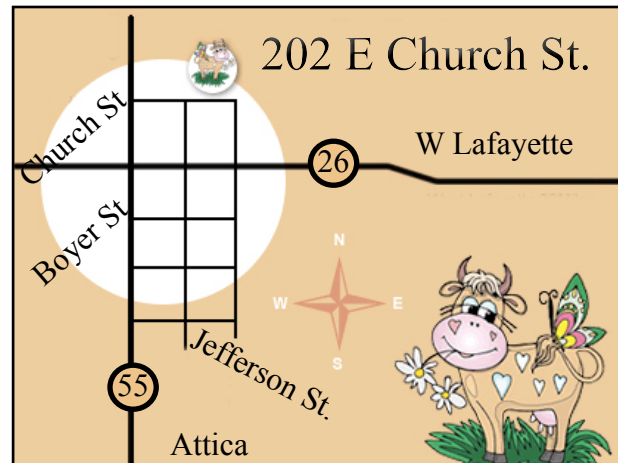
Joint misalignment interferes with normal nervous system function; often called a subluxation.



HoofStock
Veterinary Service
Patient Health is Our
Primary Concern

Dr. Cathy Alinovi
www.hoofstockvet.com

765-714-5973
Pine Village, Indiana



"Gain knowledge about the backbone - it holds the key for many diseases."

- Hippocrates



Member of the
American
Veterinary
Chiropractic
Association

Reference
Guide

Veterinary
Spinal
Manipulation
Therapy

HoofStock
Veterinary Service
Dr. Cathy Alinovi
www.hoofstockvet.com

How Is It Done?


Motion palpation localizes and identifies changes in texture, tissue mobility, or resistance to pressure at each joint.




Successful manipulation requires proper direction, force, amplitude, and velocity. During a successful adjustment, a 'release' of the restricted joint can be felt.

Once adjusted, an animal's activity normally increases, and movement should become more symmetrical.







VAGUE LAMENESS
UNEVEN GAIT
STIFF WARM UP
REFUSES JUMPS



STUMBLES



STIFF ONE DIRECTION



NOT SQUARE ON ALL FOURS
BEHAVIOR CHANGE
HOLDS TAIL TO ONE SIDE

SOUND FAMILIAR?

Vertebral column injuries can cause gait changes, increased concussive forces, and lower limb lameness. Lower limb injuries can cause altered carriage and gait. This overworks other muscles, resulting in stress on leg joints and the vertebrae. Pain and subluxation can result, creating a cycle of pain.

TREATMENT OPTIONS

Some patients enjoy the immediate relief of an adjustment; others prefer the soothing touch of craniosacral therapy.

CRANIOSACRAL THERAPY

Using a light touch, about the weight of a nickel, the therapist locates a problem area and returns the central nervous system to its natural rhythm.



Excellent for older or very painful patients, craniosacral therapy is used in both human and veterinary medicine.

MUSCLE RESPONSE TESTING

This uses the patient's muscles to pinpoint the location of the a subluxation, as well as cramped muscles and tight tendons. MRT is an essential tool used to identify the underlying cause of a spinal manipulative problem.

ADJUSTMENTS

A high velocity low amplitude thrust returns a misaligned vertebra to normal position, restoring blood flow and muscle movement.